

PARKER JAMES

ESTATES

Established since 1995



## Morpeth Terrace

London SW1P 1EN

- Available immediately
- Third floor
- Resident Porter
- Heating and hot water included
- Victoria station two minutes walk away
- Furnished
- Lift
- Overlooking Westminster Cathedral
- Extremely well maintained building
- Close to bars and restaurants

£2,850 Per Month

# Morpeth Terrace

London SW1P 1EN



Available immediately on a furnished basis is this well presented third floor flat overlooking Westminster Cathedral with lift and resident porter which forms part of an attractive mansion block on Morpeth Terrace just a few minutes walk from Victoria station.

The 44 sqm property briefly comprises an entrance hall with built in storage cupboards, reception room, fitted kitchen with integrated appliances, one double bedroom and a fully tiled bathroom.

Ashley Court a mansion block of great charm with an oak panelled entrance hall located in the heart of the Westminster Cathedral Conservation Area and within two minutes walk of Victoria overground (Southern, Southeastern, Thameslink and Gatwick Express lines) and underground (Victoria, Circle and District lines) stations, shops on Victoria Street which include a Little Waitrose and an excellent choice of bars and restaurants.



[Directions](#)

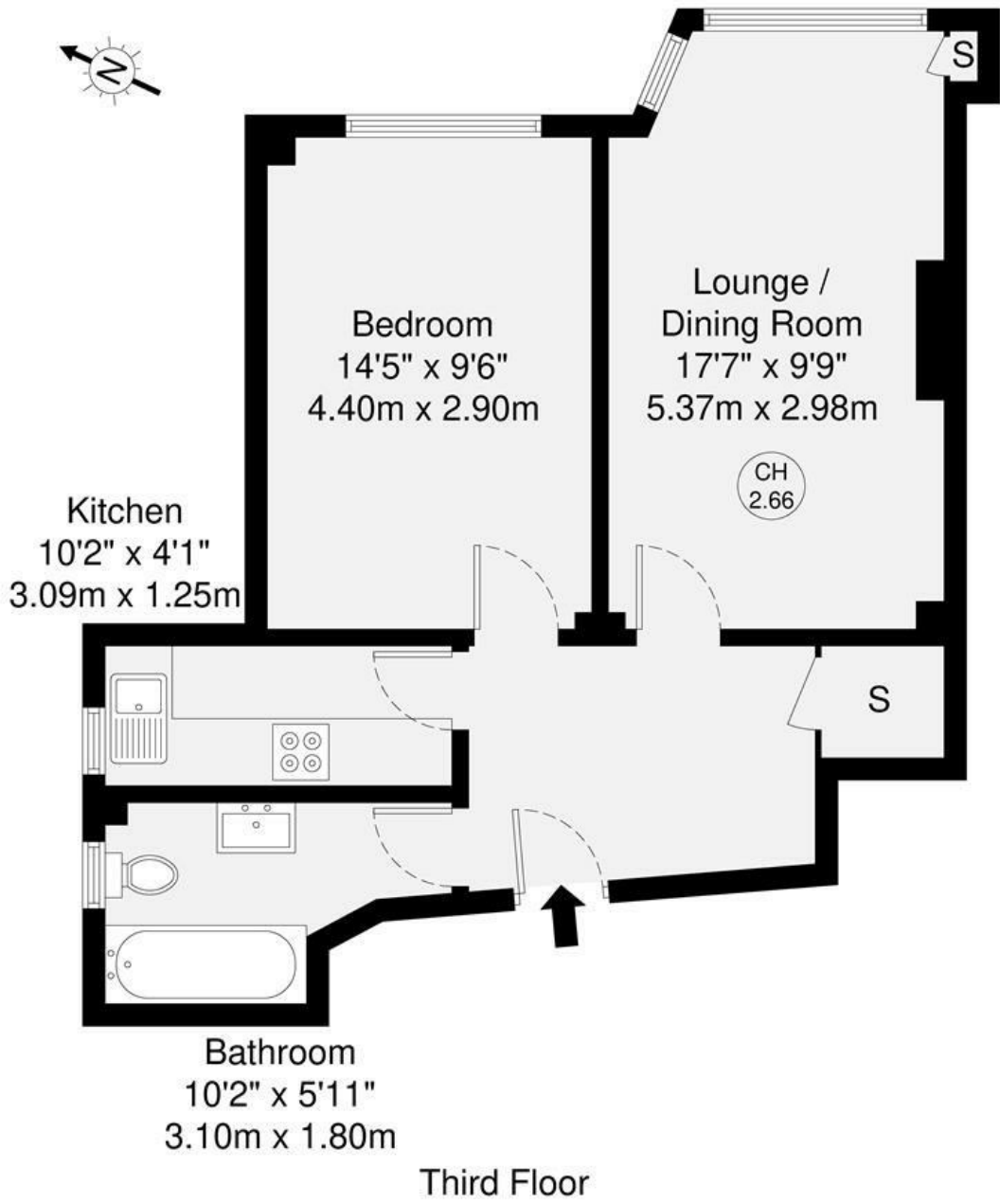


Floor Plan



Ashley Court, SW1P

GROSS INTERNAL AREA  
46.7 sq m / 502 sq ft



Third Floor

 <small>GROSS INTERNAL AREA (GIA) The footprint of the property</small> <b>46.7 sq m / 502 sq ft</b>	 <small>TOTAL STORAGE SPACE Storage and wardrobe total area</small> <b>1.2 sq m / 12 sq ft</b>	 <small>EXTERNAL FEATURES Garden, Balcony, Terrace, Verandah etc.</small> <b>0.0 sq m / 0.0 sq ft</b>	 <small>RESTRICTED HEAD HEIGHT Limited use area under 1.5m</small> <b>0.0 sq m / 0.0 sq ft</b>
---	---	--	---

Disclaimer : Floorplan measurements are approximate and are for illustrative purposes only. While we do not doubt the floorplan accuracy and completeness, you or your advisors should conduct a careful, independent investigation of the property in respect of monetary valuation.



These particulars, whilst believed to be accurate are set out as a general outline only for guidance and do not constitute any part of an offer or contract. Intending purchasers should not rely on them as statements of representation of fact, but must satisfy themselves by inspection or otherwise as to their accuracy. No person in this firm's employment has the authority to make or give any representation or warranty in respect of the property.

Energy Efficiency Rating		Environmental Impact (CO <sub>2</sub> ) Rating	
Current	Potential	Current	Potential
65	77	B	A



48 Warwick Street Soho, London, W1B 5NL  
Tel: 020 7287 4244 Email: management@parkerjamesestates.co.uk parkerjamesestates.co.uk